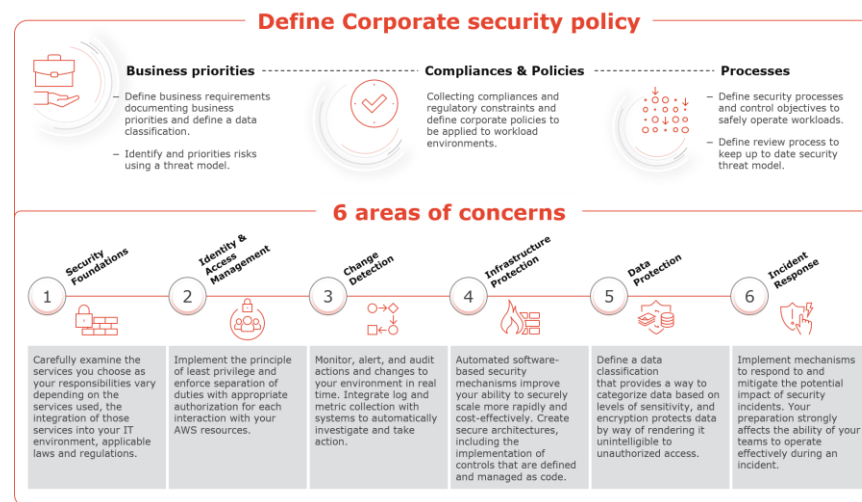


Security is important for meeting your business and regulatory requirements and to build secured architectures that protect systems and data, control access, and respond automatically to security events.

Following Cloud Well Architected principles, and Security Reference Architecture we will initiate within your organization the foundational mission scope to keep secure your systems and data along the time.



OBJECTIVES

Your organization has started moved to the Cloud and wants to verify its security posture before a security accident happens.

The mission outcomes is focused on the analysis of your security foundations, detection capability, and incident response to mitigate impact on your customers by security threat.

A remediation roadmap is proposed based on the security assessment outcomes.

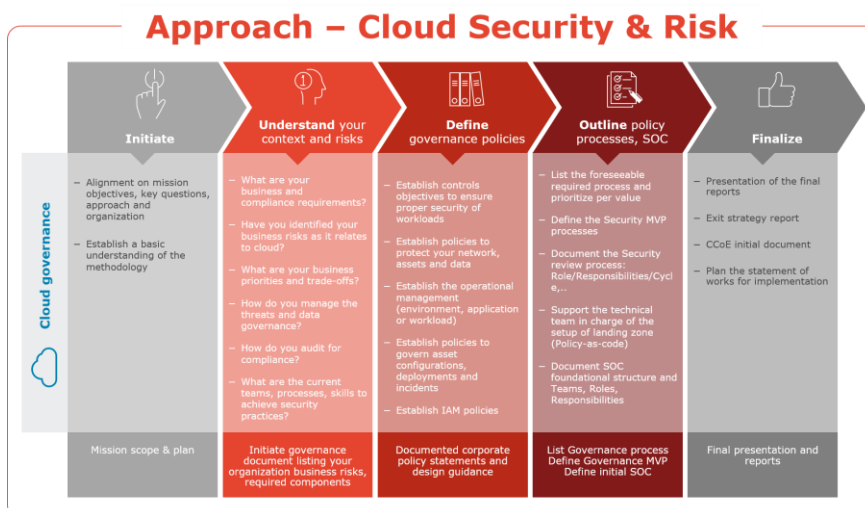
APPROACH

Based on five disciplines:

1. Security, Risk mitigation
2. Identity Management (IAM)
3. Infrastructure protection
4. Data Protection
5. Incident response

RESULTS

- ✓ Security posture and remediation roadmap
- ✓ Roles, Responsibilities and Competencies
- ✓ Security architecture and review process
- ✓ Exception, Revision, Communication process



Our proposed approach is divided into phases which allows to share intermediate results with your core team.